



# CITY OF BERGEN

UPDATES FROM BERGEN FROM THE REPORTING PERIOD  
JANUARY 1ST TO JUNE 30TH 2020

**Interreg**  
North Sea Region  
SHARE-North

European Regional Development Fund



EUROPEAN UNION

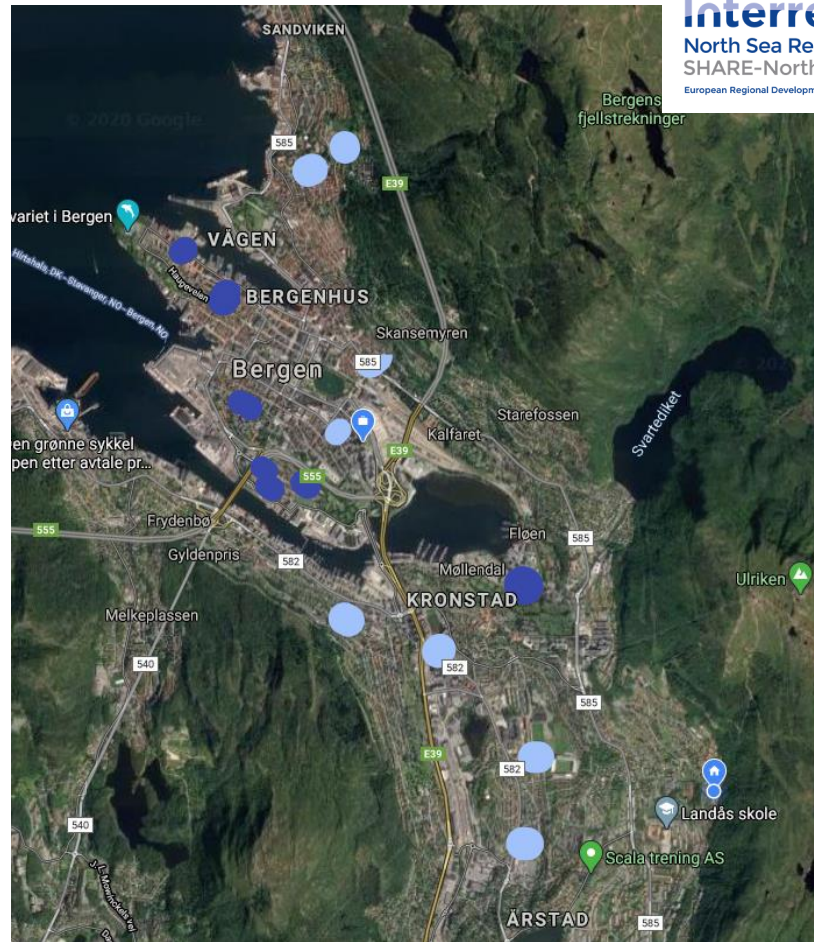
# General update:

The more strategic, systematic approach to new mobility hubs after the pilot period has come a long way in this reporting period.

- The planning of the new mobility hubs is more coordinated and integrated with other urban renewal initiatives and measures
- The formal approval procedures for mobility hubs has been clarified and streamlined
- More resources and focus has been spent on involvement and communication with inhabitants

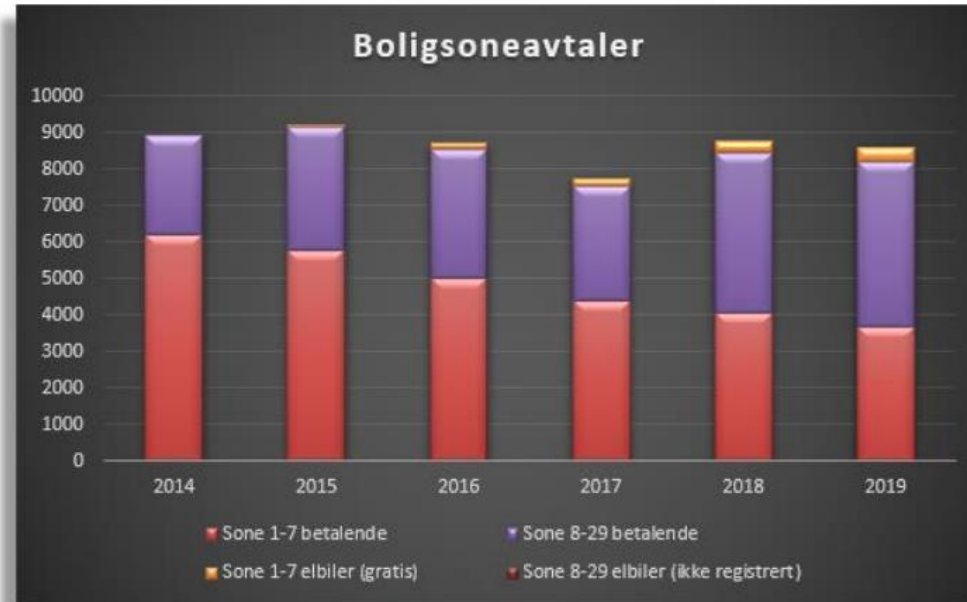


CITY OF  
BERGEN



*Existing mobility hubs in dark blue, new planned and approved locations in light blue.*

# Trend: Street parking on the decline



Figur 1 - Utvikling antall solgte boligsonekort

- The diagram shows number of valid street parking permits in urban residential parking scheme
- For inner zones (1-7): A significant decline
- For zones 8-29 the increase is due to new zones added to the scheme, not more cars in the zones
- For the first half of 2020, the trend reverses for the first time, with a slight increase for all zones. Corona affecting private car ownership?



# New mobility hub: Lyder sagens gate, City centre

- 4 parking bays for e-car sharing (with charging facilities)
- Bike parking
- Bike sharing station
- Total budget: € 80 000
- Completion: Q2 / 2021



# New mobility hub: Kiellands gate

- 4 parking bays for e-car sharing (with charging facilities)
- One parking bay for the disabled
- Bike sharing station for 19 bikes
- New lighting, planters, trees and urban furniture
- Total budget: € 170 000
- Completion: Q2 / 2021



CITY OF  
BERGEN

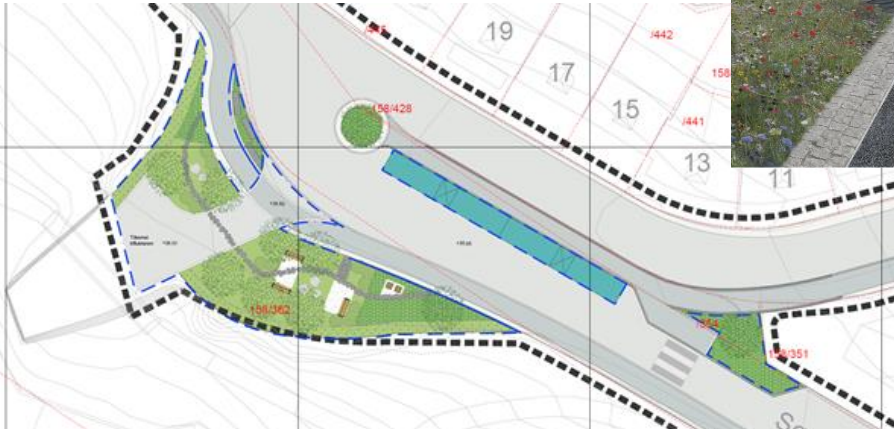
Illustrasjon  
Kiellands gate  
- sett fra Bjørnsons gate  
10.06.20 IAO

asplan viak



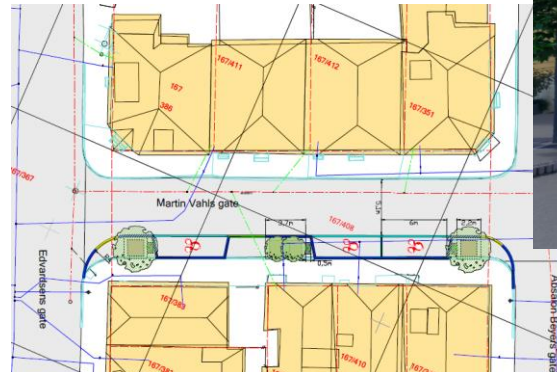
# New mobility hub: Søndre skogveien

- 4 parking bays for electric car sharing (with charging facilities)
- New "parklet" with plants, trees and benches
- Total budget: € 90 000
- Completion: Q2 / 2021



# New mobility hub: Martin Vahls gate, Sandviken

- 2 parking bays for e-car sharing (with charging facilities)
- 1 parking bay for charging private electric cars
- New planters, trees and urban furniture
- Total budget: € 80 000
- Completion: Q2 / 2021





# New mobility hub: Erik Pontoppidans gate, City centre



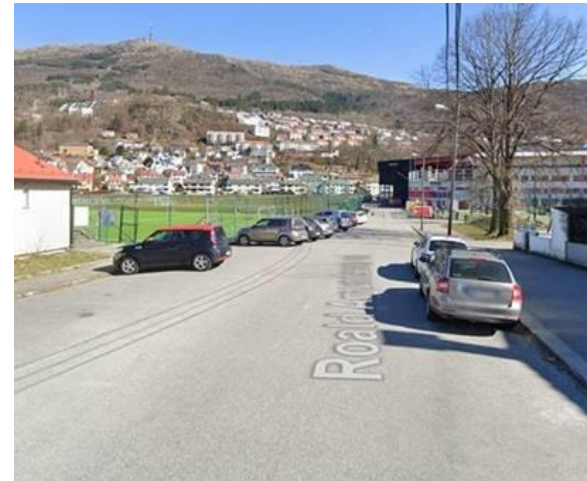
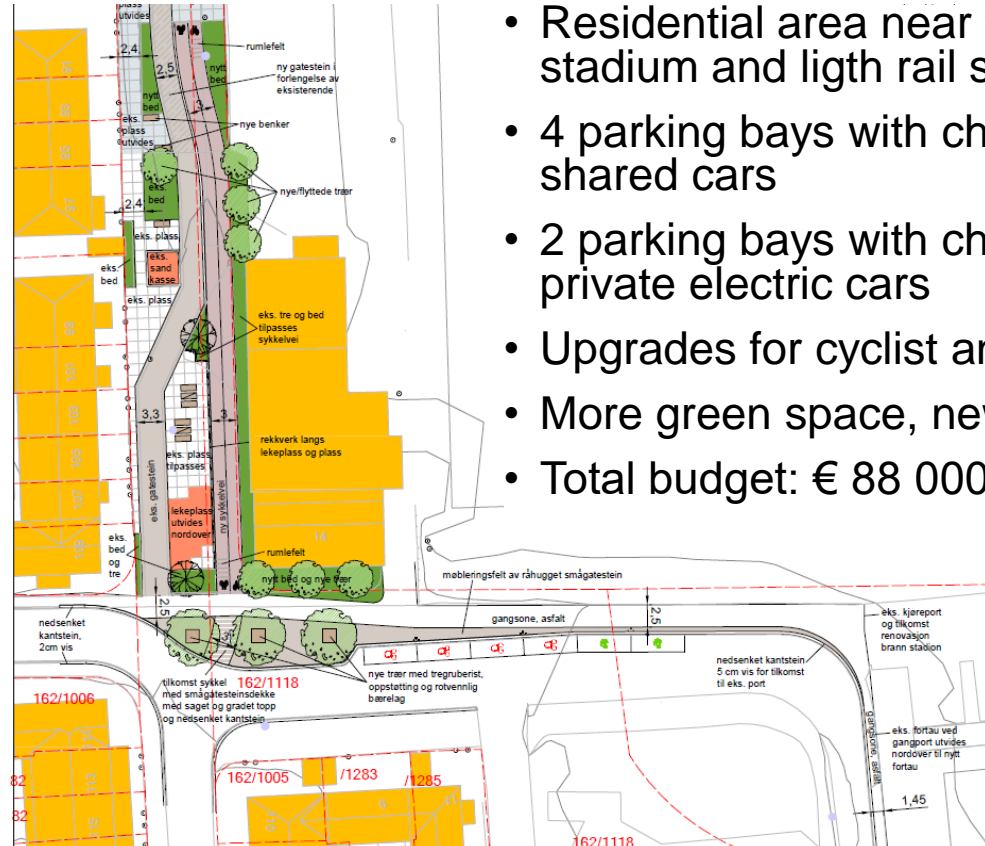
- 7 parking bays for e-car sharing (with charging facilities), + new trees
- Total budget: € 223 000
- Completion: Q2 / 2021





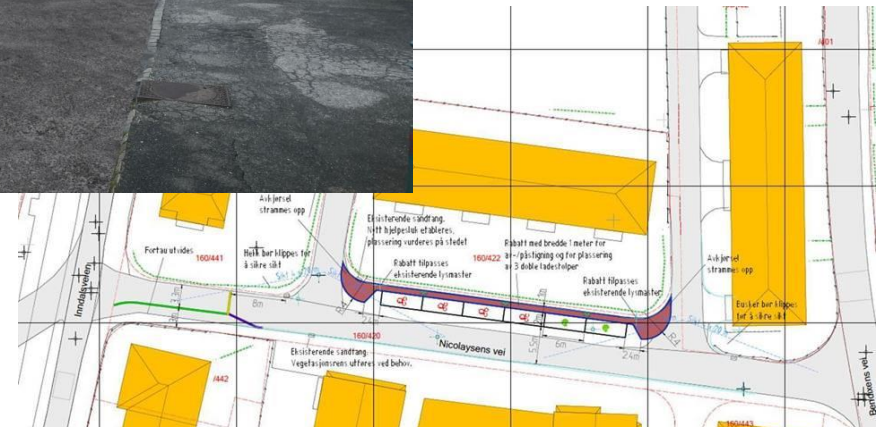
# New mobility hub: Nymark

- Residential area near the main football stadium and ligh rail stop
- 4 parking bays with charging for shared cars
- 2 parking bays with charging for private electric cars
- Upgrades for cyclist and pedestrians
- More green space, new trees
- Total budget: € 88 000



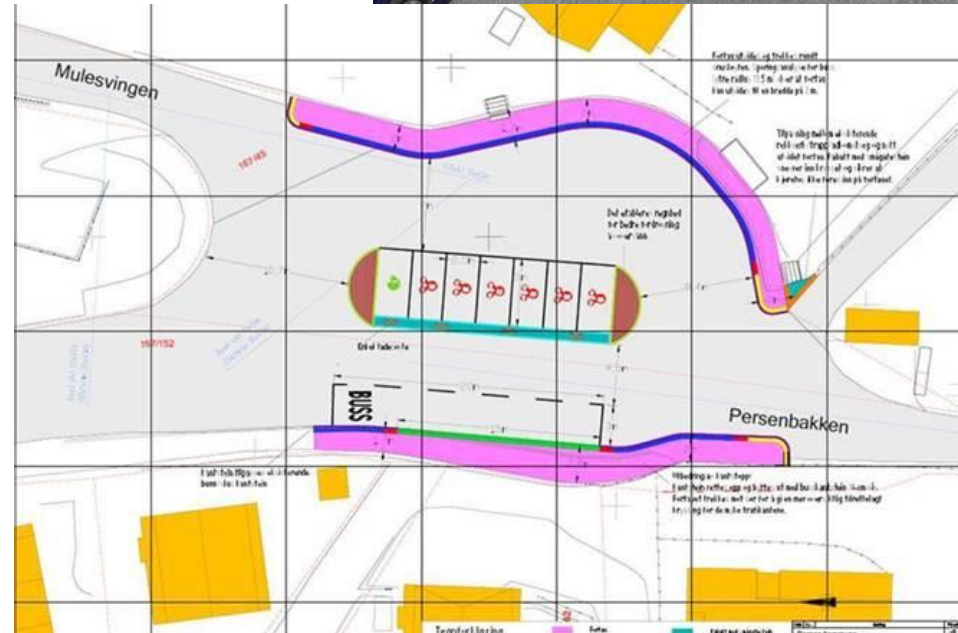
# New mobility hub: Nicolaysens vei, Minde

- 4 parking bays for e-car sharing (with charging facilities)
- 2 parking bay with charging for private electric cars
- Upgrades for pedestrians
- Total budget: € 100 000
- Completion: Q2 / 2021



# New mobility hub: Persenbakken, Sandviken

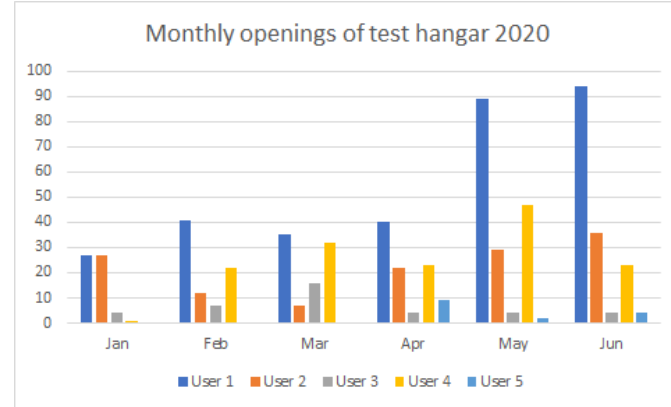
- 6 parking bays for e-car sharing (with charging facilities)
- One parking bay for private electric car charging
- Part of larger project in the area, upgrading terminal bus stop
- Planning cost: € 45 000
- Completion: Q2 / 2022?





# Bike hangars at mobility hubs

- Five households have tested the access system for one of the new bike hangars at Møhlenpris
- Feedback:
  - Having access to safe parking makes it a lot easier to choose cycling over driving
  - There is really only room for four bikes, not five
  - Access chip preferred over app (problems with app)
  - The lock sometimes gets stuck
  - Request cargo bike hangars





# Mobility hubs: Expansion of Holbergsallmenningen

- Originally with 6 parking bays for shared electric cars, 4 bays for public charging and 12 bays for other shared cars.
- Because of high demand, now expanding to 10 bays for shared electric cars and 8 bays for public charging.



# New suburban Living Lab: Åsane

Main  
public  
transport  
hub

What can  
new and  
shared  
mobility  
solutions do  
for an area  
built for cars?





# Pilot #1: Testing of smart regulatory system for micromobility (shared e-cooters)

- Geofencing and artificial intelligence
- Charging operators for parking on public property, dynamically in real time
- Avoiding clutter, conflicts with pedestrians etc
- Connect to public transport
- Highly relevant for the regulation of autonomous vehicles

